

# Miata Sounder



*Newsletter of the Puget Sound Miata Club  
The First Miata Club in the USA!*

## CORN MAZE TOUR III

*When: Saturday October 9, 2010*

*Rain or shine*

*Hosts: Charlotte Fellers,  
phone 253-333-7442*

*email editorcharlotte@gmail.com  
and*

*Dee Dahlke & Duncan Johnson  
phone 253-845-2424*

*email ToadHallWA@yahoo.com*

## Upcoming Events

### October 9

Corn Maze III

### October 30

Halloween Party

### October 31

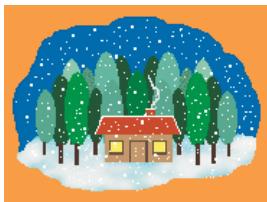
Bremerton Safe  
Trick-or-Treat

### November 6

PSMC Fall Planning  
Meeting

### December 31

Dee's Big Birthday  
Bash



*You can always add  
to the event list!  
Spontaneous  
outings are our  
specialty! All are  
invited to the Fall  
Planning Meeting to  
make next year our  
best ever!*

**"I'm late, I'm late, I'm late!" Exclaimed the White Rabbit.**

The theme for our destination Corn Maze is **Alice in Wonderland** and it sounds pretty elaborate. Feel free to bring a hat to go with the theme or white gloves like the White Rabbit wore.

**"Curiouser and curiouser," said Alice.**

Please RSVP on the website. If we have 20 or more people attend the cost will be only \$6 instead of the usual \$8. It will also ensure we have plenty of French Provincial Stew for warming us up after it's all over.

We will start from the SuperMall in Auburn on Saturday October 9. Meet at 12:30 PM, leave at 1:00 PM. Take the 15th St. SW exit off the Valley Freeway (SR 167) and follow the SuperMall signs. This is the first exit SOUTH of the SR 18 interchange. Look for our Miatas near the IHOP restaurant on the south side of the mall parking lots.

We'll take a scenic drive and blow the fallen leaves off little-known twisty roads of south King County and north Pierce County, then frolic in a corn maze in the Puyallup area. (Dress for the weather and bring extra old boots suitable for stomping around a muddy field.) After everyone has completed the maze and the search parties have returned from the cornfield we'll drive to Dee and Duncan's house nearby for a hearty semi-potluck dinner early on an autumn evening. Hosts provide main course of French Provencale Stew ("Boeuf Daube.") Suggested side dishes for you to bring: appetizers, ratatouille, baguette, and dessert. Please no dogs; this house is owned by a feline.

Please sign up with our PSMC web site RSVP feature so the hosts know how many to expect. Questions to Dee at phone/e-mail above.



# Happy Thanksgiving!



## MIATA SOUNDER

### STAFF

Editor ..... Pam McGriff  
 Assistant Editor ..... Tom Mackey  
 Distribution ..... Sean and Pam McGriff  
 Mailing List ..... Sean McGriff  
 Photography ..... Contributed

### FEATURE WRITERS

Club Events ..... Event Masters  
 Event Aftermath ..... Contributors  
 Coop's Garage ..... Bill Cooper

## PUBLISHING

The *SOUNDER* is published monthly (as close to the first of the month as possible). The deadline for submissions is the 15th of each month. All articles and ads are due by then, so as to be included in the following month's publication.

Event Masters are encouraged to get their event info to the editor as soon as possible to ensure all members can plan for the event. Send your submissions to:

Miata Sounder : [psmhome@comcast.net](mailto:psmhome@comcast.net)  
 or [tom.mackey@gmail.com](mailto:tom.mackey@gmail.com)  
[sounder@pugetsoundmiataclub.org](mailto:sounder@pugetsoundmiataclub.org)

## ADVERTISING

Classified - member	free
Classified - nonmember/business	..... \$20.00
Business Card (1 col x 2 inches)	\$20/month or \$180/yr paid in advance
Business Card Ad for members	\$15/month or \$120/yr paid in advance
1/4 page	..... \$35.00
1/2 page	..... \$65.00

## LEGAL STUFF

The Chapter assumes no liability for any information contained herein; or injury or damage resulting from the use of this information. The ideas, opinions, maintenance or modification tips expressed are to be used at the reader's discretion. Individual contributors and/or the editors express no approval, authentication or endorsement.

**[pugetsoundmiataclub.org](http://pugetsoundmiataclub.org)**

Visit our website for the latest club info, links to other Miata sites and more.

# upcoming HALLOWEEN PARTY

**Saturday, October 30, 2010 @ 6:00 PM**  
**Tom & Cindy Millar Residence**  
**14621 32nd St., Mill Creek**

Set your calendars for Saturday, October 31<sup>st</sup>, when this year's Halloween Party will take place at Cindy & Tom Millar's home in Mill Creek. Costumes will be a plus and we plan on having prizes for the most innovative submissions. Tom will be providing the primary entrée of barbeque chicken and tri-tip steak. Attending ghosts and goblins need to bring items that can accompany these entrees as well as their favorite beverage. Please RSVP via the website at [www.pugetsoundmiataclub.org](http://www.pugetsoundmiataclub.org). Cindy and I are anxiously awaiting your reply for this frightfully good time!

**Directions:** From I-5, take exit 186 (128th St. SW) eastbound towards Mill Creek. Proceed for 2.4 miles until you come to 35th Ave SE; turn right until you come to 148th St. SE (about 1 mile) and make another right; go about .1 mile making another right onto 32nd Drive SE. Millar's home is on the right side at 14621 32nd Drive SE. For more information, or should you get lost, you can call the Millar's at 206-390-3469.

## NOVEMBER PLANNING AND BOARD MEETING



**Saturday, November 06, 2010 @ 11:30 PM**  
**Mitzel's**

**5402 Pacific Hwy E**  
**Fife, WA 98424**  
**(253) 926-3144**

On Saturday, November 6<sup>th</sup> we will be conducting our Planning and Board Meeting. In the past we have had a nice private room for this event at Mitzel's in Fife and we will plan to make it a similar venue. This is the time that we plan and develop our event calendar for the coming year. This is also your opportunity to unleash your creative spirit and bring forth your brainchild about a special ride you have been thinking about. So, bring your creative juices along and plan on attending this important club meeting. If you are a novice, don't be concerned as there are plenty of experienced ride hosts to help you along. Following the Planning portion of the meeting we will also be holding a PSMC Board Meeting. Please RSVP via the website at [www.pugetsoundmiataclub.org](http://www.pugetsoundmiataclub.org).

**Directions:** From I-5, take exit 137 westbound. Take a right at Highway 99. Mitzel's will be immediately on your right.

# upcoming

## Dee's Big 65th Birthday Bash

Hosted by: Dee Dahlke and Duncan Johnson  
Questions and RSVP to Duncan at  
Duncanpjohnson@mac.com  
253-845-2424

We enjoy your company so please share this day with us

Make this your new year's celebration

or Come early and go on to more festivities

Enjoy great food and great company

At 2007 36th Street SE, Puyallup 98372

Save the Date

Friday

December 31, 2010

1:00 to 6:00 pm

NO gifts please. It's the age of downsizing not accumulating. If you choose, you will have an opportunity to make a tax-deductible donation to Dee's favorite charity.

**YWCA Pierce County**

Domestic Violence Prevention Programs  
and the first Women's Shelter in the state

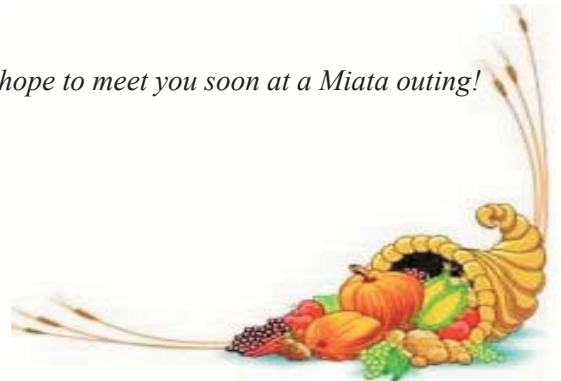
## Familiar Faces

Barbara Mitten	91 BRG
Eric & Barbara Cooley	02 Yellow
Darrell & Stephanie Hooper	08 Highland Green
Tom & Cindy Smith	00 Green
Fred and Sandi Holler	03 Garnet Red
Frank Shriver and Carol Kus	93 Red
Jack & Mary Ann Wise	96 White

## New Faces

Cara Clark	Gig Harbor
Emily & Larry Muir	Renton
Jenna & Penny Slingerland	Seattle
Ruth & Richard Jaslowski	Renton

*We hope to meet you soon at a Miata outing!*



## *First Annual Autumn Rallye*

By Vickie Olsen

Rain had been forecast for Saturday September 18, the day of the first annual PSMC Rallye/poker run/fund-raiser. But the Miata Club-ites perhaps hadn't gotten the word, and showed up at Coop's Miata in Maple Valley with tops down, ready for a fun run. And the 30% chance of showers materialized into the 70% chance of sunshine. The fun began at a leisurely pace since Coop emphasized during the driver's meeting that time was not a factor, but lunch would be served at 1:30. Which meant, enjoy the ride; and if you get lost, just come back at 1:30. Who wouldn't love those priorities?



Vera Fellers and Mindy Bohnas checked the participants in, handed out beautiful green commemorative glasses, door prize tickets and the first set of driving directions. Drivers left Coop's a few minutes apart from one another and proceeded to the first rest stop and pick-up point for the first poker card and the next set of directions. The run continued through some of east King county's most beautiful, less known back-roads. It seemed that bicyclists, joggers, car clubs, and outdoor enthusiasts of all types were taking advantage of the gift that Mother Nature had delivered. It was a "snagged" late summer day, with vine maple leaves showing off their fall reds and greens as the Miatas snaked through the 2 ½ hour course through southeast King County on sunny back-roads, through Hobart, Maple Valley, Cumberland, and the lush Green River Valley. Rest stops were at the Tiger Mountain Country Store, Nolte and Flaming Geyser State parks and Green Valley Meat Market. Along the way there were roadside markets offering local farm produce and honey.

Back at Coop's, picnic tables, under cover in case of rain (thank you Coop and Karen), had been readied for the group to enjoy a delicious lunch of gourmet hotdogs, fruit, and other assorted yummys. And for dessert —Mindy Bohnas' rich triple chocolate brownies! Some of us were so focused on the brownies we hardly remember what was on the rest of the menu! But it was all good.

Then the poker hands were revealed. The winner, Tom Mackey, had a bunch of matching cards. And someone else came in second with a bunch of cards all in line. The winners were handed white envelopes; perhaps wonderful prizes, but no comparison to the exquisite gift baskets designed and executed by Charlotte Fellers. The highlight of the day was the drawing for door prizes: Charlotte's beautiful gift baskets. They were definitely a boon for those of us with lousy poker hands! This writer, the winner of the "Picnic Basket Collection," can attest to the time and thoughtfulness that went into the creation of the baskets. Thank you once again, Charlotte. A+!

## *The Great South Bend Enduro*

by Dee Dahlke ('99 silver "Road Dancer") and Duncan Johnson

*"We're on the back roads, we're on the hillsides,  
We're on the river, rain or shine;  
On that Willapa River..."*

Thus sang the village troubadour at the post-parade fish fry, but we're getting ahead of our story. Over the last few years PSMC's annual South Bend club activity has evolved to be a major road run, with the city's "Come and Play On Labor Day" parade being just a little frosting to enjoy after the main event. This year things amped up by moving the start to a breakfast in Gig Harbor, to better attract more members from the northwest interior, and there were two intermediate stops (Shelton and Montesano) where more Miatas could join the zooming. All that resulted in a 110-mile back-roads cruise just TO the parade, a fun, but long, day.

At breakfast Marti & Bob Mott joined us; Sandy McKnight & Maury Fugitt also cruised in to eat and provide details of their recent Miata tour to Colorado. Other commitments kept them from the rest of this day's road run. Then we were off to Shelton by the usual route, surprisingly traffic free for a holiday weekend although some plodding "pace cars" bogged us down in a couple of places. In Shelton, we picked up Sally & Bob Thomas plus Mindy Bohnas with Charlotte Fellers as navigator. Say what? Turns out the elderly radiator in Charlotte's Miata had suffered a spasm of senility just prior to this event and forgot to cool the engine. Fortunately she reacted quickly and shut it down to await the tow truck so no engine damage was done. But she needed a ride — enter Mindy. Leaving Shelton, things get real countrified real quick and the area called "Lost Lake" is not misnamed. We're still not sure where West Satsop Cloquallum Road actually is, other than somewhere near Schafer State Park, but its multiple tight corners are a delight in an agile sports car and they go on forever. Between the park and Satsop we also found a dandy 10-mph downhill hairpin right turn to further everyone's steering and zooming pleasure. About now the sun was peeking through the morning clouds, and the temperature was warming, so at the Montesano pit-stop the tops came down. We also picked up Laurie & Ron Doering plus Jim Giffin there to expand our Miata squadron.



*Oh, the sights you see at a parade!*

# aftermath

cont'd

The final leg of the run over the hills on US 101 is always pretty much the same, and PSMC drivers were on our best behavior through Raymond, so as not to upset the vigilant Local Authorities. Upon arrival and getting our parade assignment, we found Bill Bell and Jennifer Huber were waiting for us, having arrived from the ocean beaches. Rosa & Randy Umemoto also appeared on site. We set out to test the new South Bend Coffee Company, an espresso shoppe that has taken over the long-defunct Boondock's restaurant. Their wares were found to be tasty and their restroom quite deluxe by local standards. Take note for future beach runs. Our group

was staged 53rd in the actual parade, so we got to watch a lot of units march past before we swung into action. The tough economy has not diminished this parade or its crowds, but then Pacific County has



gotten hardened by a lot of tough times over the years. Their enthusiasm is amazing and contagious. PSMC cars were executing our usual parade ballet directly behind some candidate for county sheriff; not only was he kissing hands and shaking babies all along the route, he had a raucous tavern band riding a trailer just ahead of us and blasting out his theme songs. Next year bring the earplugs. We did have a new bubble-blowing kiddie toy on board so we powered it up and led the Miatas through town trailing a stream of glimmering spheres. Our bubbles did not turn the tavern band into The Champagne Music of Lawrence Welk (thank goodness!) but we did provide amusement for sidewalk spectators of all ages. It appears nobody doesn't like bubbles! Ah, but there is one downside: whenever one hit the car the bubble burst with an ugly wet splat. Oh, well, that's why our driver always brings along her personal Lot Boy with his portable detailing kit.

We all had been issued the usual Official Tickets for free cold hot dogs and warm sodas at the finish line, but they had run out before we arrived. No big deal, we sneaked out of town and into Raymond, once more to crash the traditional Family Fish Fry at Rosa's brother's house on the hill. Your reporters are not sure how the logistics of this whole fish thing work, but there is a powerful lot of food and drink (and it just keeps coming and coming) and there are a whole lot of people partying in and partying out all afternoon, some of whom we actually knew. Plus, this year we had that aforementioned local singing troubadour to add even more fun to the atmosphere.



## ZOOM-ZOOM

### MIATA HAWAIIAN SHIRTS!!!

Thompson Automotive Premiered these shirts at Miatas In Moab IV and they flew off their table. I called them to inquire about a possible discount for our club only to find that they have reduced their prices for an End of Summer sale. These shirts look great and are cut a little larger than normal, so take that into account when you order. Here's a link to their web site:

<http://www.thompson-automotive.com/Shirts.html>



---

*cont'd from previous column*

We opted for highway 6 to head home, our roadster following the Doerings until they turned southward out of Pe Ell. Sports car drivers always rate that lovely road highly as we groove easily through the hills and forests and farms. It's one of our favorite routes, and little used by whale migrations (fleets of wallowing RVs.) Further on, a little creative map reading empowered us to get all the way home on back roads without ever entering the I-5 freeway slog. Up there in the Willapa Hills we had noticed the first trees starting to turn color, and even in this year of strange weather that reminded us another great summer of sports motoring would soon be going into the record books. Keep on zooming.

## *Miatas in Moab, Part II*

by Tom Mackey

The red jeeps were sitting outside a convenience store just out of town the last time I saw them, but now they became rapidly growing red dots in my rear-view mirror as we headed up the narrow canyon. Construction equipment, towering walls of red-rock on the right, drop offs to the Colorado River below on the left – none of that deterred the testosterone fueled rent-a-jeep jockeys as they whipped back and forth through and around our small Miata caravan. A small cry of relief escaped Marilyn's lips as the last of them barely squeezed between the lead Miata and an oncoming diesel pickup towing a trailer full of river rafts – and then they flew up the canyon and were out of sight in a blink. We were on Day One ( Friday ) of Miatas In Moab IV, on our way to a very special group of arches in BLM land just outside of Arches National Park. Bow Tie Arch and Corona Arch are reachable via a short drive out of Moab and then a 1.5 mile trail, most of it over "slick rock". The lower part of the trail is fairly easy, the way marked by rock cairns, but the upper part is reachable only by a climb up a ladder set vertically into the rock and a scramble over uneven surfaces before it smooths out again. The arches are visible from the end of the lower trail, but for the full impact, it is well worth the climb and scramble to reach the weeping garden wall kept moist from the slow seep below Bow Tie and the magnificent spectacle of Corona. I recommend you take the following link [http://www.utahredrocks.com/hike\\_corona.htm](http://www.utahredrocks.com/hike_corona.htm) to get a feel for this very special place. These were the only arches we saw this trip, as we had hiked extensively in Arches National Park during our previous visit four years ago when we attended Miatas In Moab, The Sequel.



*Miatas in Moab Run*

We went back to the Canyonlands Inn to change clothes, and to buy some Miata goodies. Thompson Automotive showed up with Miata Hawaiian Shirts, and those were easily the most popular of all the Miata-themed merchandise. The first time I wore mine at a PSMC event, I was inundated with questions as to where I got it. Here's a link to where you can get your own: <http://www.thompson-automotive.com/Shirts.html>

Then it was off to a good lunch at the Moab Brewery and then a visit to "Hole in the Rock" <http://www.holentherock.com>, a tourist trap which was originally the 5000 sq. ft. home hollowed out of a huge rock formation by a hard rock miner for his wife. The tour was short but interesting, and the grounds were filled with interesting things to pose by and take pictures of. We stayed longer than we had planned, and had a great time for being somewhere so tacky!

That evening the storm clouds rolled in and the Western Show and Gun Fight complete with a rubber chicken being shot out of the sky, just barely ended before the wind calmed and the rain started. We were at the Bar-M Chuckwagon, where you are served cowboy-style on tin plates and cups, over a gravel floor, and on rows of picnic tables. It was all good fun, and the food was OK, but in my opinion, the musical show after dinner was the best part. All four of the principals are accomplished musicians, and it shows. The music was Cowboy, the ambiance was Country, and the jokes were Corny. When they played and sang "Cool Water", they encouraged audience participation by breaking out Super-Soaker water pistols and soaking down anyone not singing along to the refrain, "Cool, Clear, Wa-ter"! As the night progressed we found that the owner, who played the marshal in the opening gun fight, plays lead guitar, is also the lead vocalist, and is camp cook, as well. The other three are equally adept at various roles, and it was a treat to be part of their dream living the Western Way. The Bar-M Chuckwagon – check it out here: <http://barmchuckwagon.com/theshow.html>.



*Tom with a "Moabite" bull*

# 2010 Calendar

For details about these events or to **RSVP**, check out the Calendar at [pugetsoundmiataclub.org](http://pugetsoundmiataclub.org)

## October 2010

- 9 Corn Maze III, hosted by Fellers & Dahlke/Johnson
- 30 Halloween Party, hosted by Millars.
- 31 Bremerton Safe Trick or Treat.

## November 2010

- 6 PSMC Fall Planning Meeting, Mitzel's in Fife, lunch at 11 a.m., meeting at noon.

## December 2010

- 31 Dee Dalhke's Big Birthday Party! Puyallup. Cruise in for an afternoon casual party and then head off to your nighttime celebrations.

*con't*

The next day we enjoyed a very good breakfast at Canyonlands – they had really done a nice job of turning a small meeting room and open area into a kitchen and eating area, and the food was great, especially considering it was part of your room. Then we headed south out of town towards the La Sal Mountains. We had heard about a cute General Store in Bedrock just over the border in Colorado, so stopped there – it may have been cute and bustling once, but the store was for sale, and it has clearly seen its better days. Still, we were glad we stopped to take a few pictures and spend a little cash, because these little stores are fast disappearing from the landscape.

*STAY TUNED FOR PART III IN THE NEXT ISSUE!*



*How people love their Miatas!*



## OFFICERS/DIRECTORS WEB COMMITTEE

### Chief Officers

Operating .....	Mike Springer
Executive .....	Tom Millar
Communications .....	AJ McGranaghan
Financial .....	Sean McGriff

### Directors at Large

Tom Mackey	Tommy Gores	Pam McGriff
Chris Stollery	Charlotte Fellers	Sean McGriff
Brian Louderback	Mindy Bonhas	Frank Shriver
Cindy Millar	Allen Ohlsen	

### Appointed Positions

Insurance Coordinator .....	Dan White
Data Coordinator .....	Sean McGriff
Parade Coordinator .....	Open Position
Sounder Editor .....	Pam McGriff
Webmaster .....	Nathan Allan

### Web Committee

Webmaster/EIO .....	Nathan Allan
Assistant Webmaster .....	Mindy Bohnas
Classified Ads/Specialty Programmer .....	John Young
Special Graphics .....	Mike Springer

## MEMBERSHIP

The club operates as a non-profit organization and relies primarily on volunteer services. However, sponsorship of events, the publication and mailing of the monthly newsletter and operating supplies constitute a financial burden that must be met by the membership. Make your Miata experience more enjoyable-join and participate. To keep the club meaningful and solvent, we need your support.

To join go online at [pugetsoundmiataclub.org](http://pugetsoundmiataclub.org) or send your name, address and check for \$30 (annual chapter dues) to:

**Puget Sound Miata Club**  
222 Wells Ave N  
Renton, WA 98057

---

Puget Sound Miata Club  
222 Wells Ave. N  
Renton, WA 98057



**Thanks to the following Miata dealers and businesses who provide PSMC member discounts (simply show your PSMC Card):**

*Coop's Miata of Maple Valley (425) 432-9666*

*Doug's Lynnwood Mazda (425) 774-3551*

*Mazda of Everett (425) 353-3403*

*Louie Orrino at South Tacoma Mazda (253) 722-2888/Cost plus 20%*

*University Mazda of Seattle (206) 634-1191*

*Whidbey Island Mazda of Oak Harbor (360) 675-2218*

*Miata Top Bob's, (206) 782-8081*